



# CONVERO

STYLISH CLOTHES STORAGE



# The dressing room of your dreams.

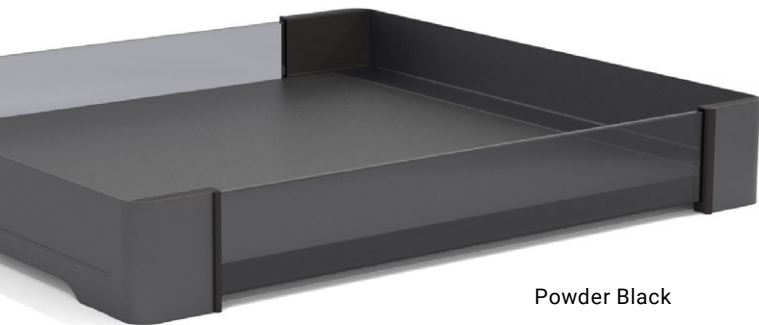
Everything perfectly stored and at your fingertips.

The CONERO range from Kesseböhmer is its first comprehensive range of fittings for private dressing rooms. From elegant inside pull-outs to the brand new TOP wardrobe lift, CONERO covers all bases.

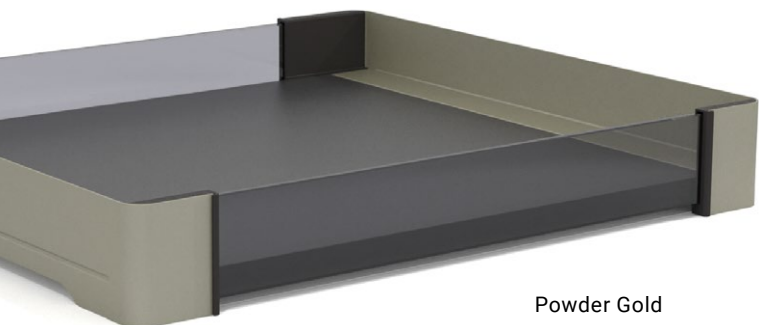
Whether planning an open style or for interior fittings to disappear behind revolving or sliding doors, design and function are the key elements in Kesseböhmer's CONERO range.

Storage space and visibility, accessibility and ease of use demonstrate this as well as a high-quality design vocabulary with a coordinated colour concept.





Powder Black



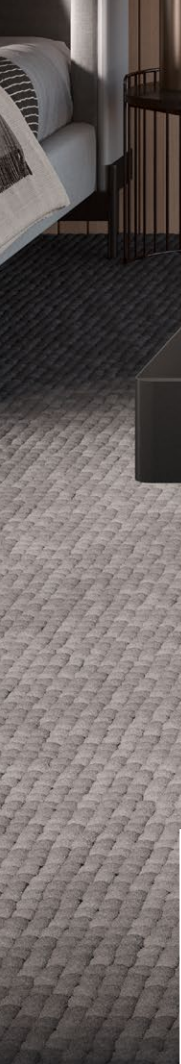
Powder Gold

## The concept

The ultimate goal of the fittings is maximum adaptability to suit any custom design. CONERO is therefore available in two different clear installation depths of 475 and 345 mm.

Thanks to the variability in width of the functional and design-oriented equipment elements CONERO covers clear cabinet width to the millimeter. CONERO is available in two pull-out heights of 72 and 168 mm.

Images show latest concept state and may differ slightly from series.



## Options

The shoe rack option, which is also available as a fixed accessory, converts inside pull-outs to a stylish shoe storage unit.

The classic low inside pull-out is complemented by a range of elements for organising rings, necklaces, sunglasses and much more.

## The inside pull-outs are based on

... the narrow frames in the Soft Edge design which have slightly rounded corners. Full-extension pull-outs with cushioned self-closing mechanisms and tinted front panels put convenience front and centre.

Versatile and unique designs at your fingertips. Installers can add their own front or back panel materials to the wooden base or simply make use of the glass elements available from Kesseböhmer.

Create unique dressing rooms with flocked mats and versatile inserts for organising drawers.

Pull-outs with high side panels are the ideal solution for loose clothing and the practical convenience tray provides easy access to clothing which is usually stored flat such as T-shirts or pullovers.



## Organizer

Double your trouser hanging space by adding a storage level. The hangers can be removed one at a time to allow easy access to the second hanging space.

Everything works perfectly, despite a clear installation depth of only 345 mm.

The open design allows long trousers and laundry sacks to be brought to the front extremely easily, emphasizing how exceptionally easy it is to use this functional pull-out.



## Mounting & fittings

The CONERO inside and functional pull-outs are perfectly designed for use with a 32 mm hole pattern. Two low pull-outs are exactly the same height as a high inside pull-out.

The inside and functional insert pull-outs have adjustable widths which means they can form a clear width from 334 to 1020 mm. With the inside pull-outs, the fitter only has to customize the wooden shelf.

Kesseböhmer spacer strips allow obtrusive elements such as hinges or sliding doors to disappear easily. The Kesseböhmer CX concealed runner in nominal lengths of 320 or 450 mm is used for the pull-out system.





## Shoe fence and clothes rails

The CONERO shoe fence allow shoes to be displayed perfectly in units without taking up space.

Kesseböhmer also offers clothes rails matched to the CONERO colour palette. In addition to the classic clothes rail, the CONERO range also includes clothes rails with in-unit illumination.

The key feature: installers can easily install their own lighting and do not have to match different lighting technologies to each other.



# Belt and tie pull-out

The CONERO side pull-outs afford additional storage space under the clothes rails.

The universal hooks are perfect for storing belts, ties or even scarves and shawls. Their soft, non-slip material prevents marks, even on delicate silk ties.

The bowl provides a storage space in the wardrobe for small items such as cuff links or tiepins and has additional hooks for belts.

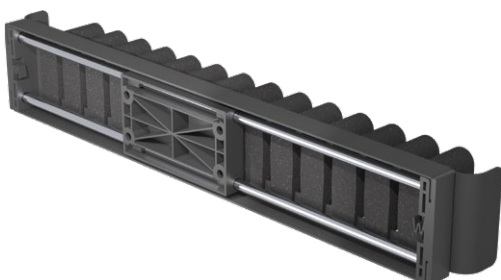


## Mounting & fittings

Belt and tie pull-outs have grease-free sliding guides as partial pull-outs so there is no danger of clothing hung in the unit being soiled.

As the system has a 100% symmetrical design, pull-outs can be fitted on either the left or right side of the unit. CONERO spacer strips allow the door closers to be easily concealed.

The belt and tie organiser is also available without a pull-out runner in exactly the same look for fitting to the inside of the door. The pull-outs are available for 345 and 475 mm clear installation depths and can be easily fitted in the 32 mm hole pattern.





## Side trouser pull-out



Belt and tie pull-outs have grease-free sliding guides as partial pull-outs so there is no danger of clothing hung in the unit being soiled.

As the system has a 100% symmetrical design, pull-outs can be fitted on either the left or right side of the unit. CONERO spacer strips allow the door closers to be easily concealed.

The belt and tie organiser is also available without a pull-out runner in exactly the same look for fitting to the inside of the door.

The pull-outs are available for 345 and 475 mm clear installation depths and can be easily fitted in the 32 mm hole pattern.



## CONERO wardrobe lift

Inconspicuous but effective: the only system on the market to have a handle with a fixed stop on the clothes rail. The wardrobe lift uses the leverage this creates to ensure minimum force is required to raise the lift, even when fully loaded.

This energy storage system is designed to provide the maximum force when needed, i. e. immediately after releasing the lock. Unbelievably easy due to the lever effect!

This self-regulating system also prevents the fitting swivelling downwards in an uncontrolled manner. The wardrobe lift is braked throughout its movement which not only protects the unit but it also keeps the user safe.

## Mounting & fittings

The CONERO wardrobe lift and CONERO TOP wardrobe lift are available in widths of 445-1168 mm for loads of 12 kg. Although both systems will function perfectly when empty, a **minimum load of 0.5 kg** is recommended.

The classic wardrobe lift is also available for loads up to 15 kg and widths from 805-1168 mm. A **minimum load of 4 kg** is required for daily use. The width of both fittings can be adjusted by 183 mm.

A clear installation depth of at least 475 mm is required for the CONERO TOP wardrobe lift. The CONERO wardrobe lift without a tray can be installed in shorter units.



## CONERO TOP wardrobe lift

### Unique performance!

Time to throw out that step-stool to reach the top shelf hidden away in your dressing room! The Kesseböhmer CONERO TOP wardrobe lift brings the storage space to you.

Sophisticated technology combines force, stability and aesthetics to deliver the performance you want. Based on the classic CONERO wardrobe lift, this solution is one of the best wardrobe lifts on the market.

The clothes rail is securely located in the lever arms, generating outstanding torsional rigidity which allows both levers to move in tandem. And, unlike other wardrobe lifts, even if the load is distributed unevenly.

The power packs are designed to ensure the hinges and door closers are concealed as usual. Kesseböhmer also offers spacer strips for other obtrusive elements such as protruding sliding doors.



[WWW.KESSEBOEHMER.COM](http://WWW.KESSEBOEHMER.COM)